

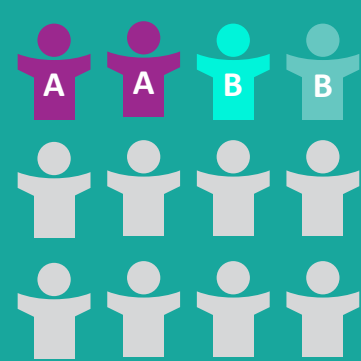
GROUP SIZE AND RATIO REQUIREMENTS

FOR OREGON CHILD CARE PROVIDERS DURING COVID-19

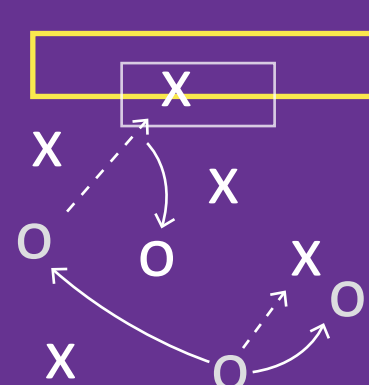
Following guidance from Governor Kate Brown, child care settings should support physical distancing of at least six (6) feet. However, young children are likely unable to practice physical distancing. Therefore, limiting the size of and maintaining **stable groups** is critical.

According to “Statewide Standards for Child Care Operations,” **12 children can be enrolled in a classroom or stable group, but only the maximum group size of children can be in a classroom, in attendance at the same time.**

i “Stable” means the same children are in a group each day.



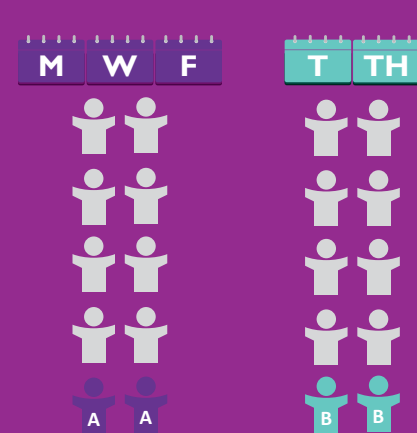
Think of it like a sports team – 12 people are on the team but not everyone can be on the field.



For example, a Certified Family provider may have 12 preschool-aged children enrolled in a stable group.

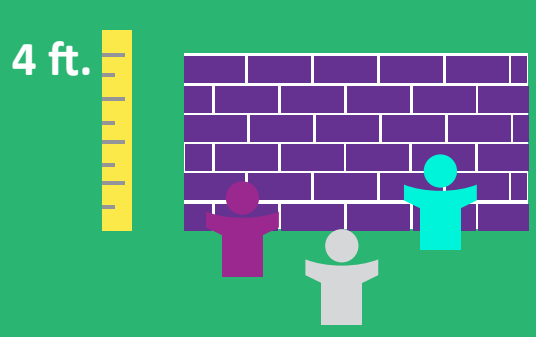
Children A attend Monday, Wednesday, and Friday. Children B attend Tuesday and Thursday.

However, in this example there may not be more than 10 children in attendance at the same time, and no more than 12 children in a stable group.



Certified Center (CC) can create separate spaces for two stable groups a large room using a barrier or divider that is at least 4 feet high. Materials must be sufficient and heavy enough that children cannot move or crawl over the barrier.

i This requirement is the same for children of all ages. All barriers must be secured so there is no concern of the barrier tipping over on children.



Additional adults for special activities are not allowed. However, in addition to staff necessary to maintain ratio compliance, it is acceptable to have additional staff for health and developmental supports to meet a child’s particular needs, or simply to provide better quality care.

i All adults coming into the child care facility must observe the safety requirements. Make sure to maintain a stable group with the same staff with the same children each day.



Group size and ratio are two completely separate areas.

Child care providers need to comply with ratios in guidance depending on your type of facility – – – →

A **Registered Family (RF)** may have one group of up to 10 children. Of the 10 total children, there may be no more than six children ages preschool and younger and, of these six, no more than two children under 24 months.

- Registered Family (RF)
- Certified Family (CF)
- Certified Center (CC)

A **Certified Family (CF)** may have two stable groups of up to 10 children in separate areas of the home and no more than 16 children total or up to the maximum capacity of the license. The additional group must be approved by the licensing specialist. Each group of children must be in a space that meets the minimum of 35 square feet per child. Each group of children must meet staff to child ratios as defined in Oregon Administrative Rule 414-350-0120, found within the Certified Child Care Rules (page 28).

- Registered Family (RF)
- Certified Family (CF)
- Certified Center (CC)

A **Certified Center (CC)** may have one stable group of up to 10 children per classroom. Large rooms may be divided into two rooms with the approval of a child care licensing specialist. Each group of children must be in a space that meets the minimum of 35 square feet per child. A Certified Center (CC) must maintain the staff to child ratios listed in the table.

Age	Ratio	Maximum Group Size
Six weeks to 23 months	1:4	8
24 months to 35 months	1:5	10
36 months to Kindergarten	1:10	10
Kindergarten and up	1:10	10

For more information, visit <https://oregonearlylearning.com/COVID-19-Resources>. Providers can also submit questions to the ELD by emailing ProviderContact@state.or.us.