

Community Readiness

Asset Mapping for Early Learning Hubs

TECHNICAL ASSISTANCE WEBINAR

2013

PRESENTED BY
+Heidi McGowan &
Shane Sasnow

Agenda

COMMUNITY READINESS PRESENTATION
QUESTIONS & ANSWERS
CONTACT INFORMATION



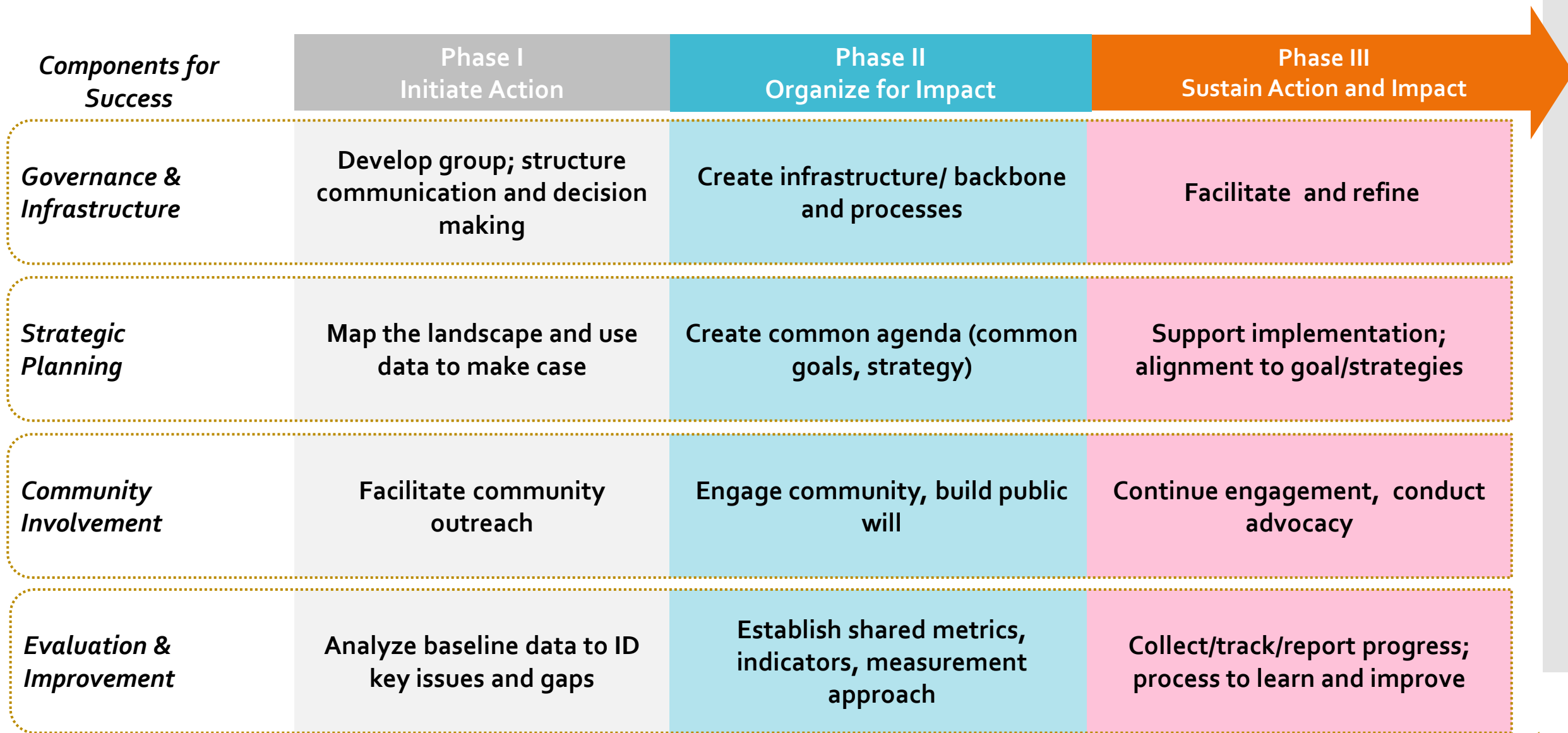
Shane Sasnow
Webinar Facilitator

Vision



**COMMUNITIES WORKING TOGETHER TO
IMPROVE OUTCOMES FOR CHILDREN.**

Collective Impact Efforts Tend to Develop



Community Readiness Documents

COMMUNITY READINESS ASSESSMENT

SERVICE PROVIDER READINESS ASSESSMENT CHECKLIST

OregonEarlyLearning.com

- Major Initiatives (drop down menu)
 - Early Learning Hubs
 - Technical Assistance: Info and Resources

Presentation Agenda

*****INTERACTIVE**

WHAT IS ASSET MAPPING

WHY DO ASSET MAPPING

WHO SHOULD BE INVOLVED

**ASSET MAPPING PROCESS: KEY
QUESTIONS**

ACTION PLANNING

REVIEW

Asset Mapping Definition

WHAT IS ASSET MAPPING

Creating an inventory of the assets (resources & strengths) available in a community that may be leveraged to solve problems, overcome challenges, and meet needs.

Asset Mapping Purpose

WHY DO ASSET MAPPING

- To understand what resources are available to solve community needs.
- For ELHs identifying assets to solve for
 - Kindergarten readiness
 - Stable attached families
 - Integrated and aligned early learning system focused on results
- It is the balance to Needs Assessment

Asset Mapping Participants

WHO WILL BE INVOLVED AND WHAT ARE THEIR ROLES AND RESPONSIBILITIES?

- The community
 - Children, Parents & Families
 - Residents
- In ELHs Leaders from
 - K-12 education
 - Health
 - Social & human services
 - Early childhood education
 - Business

Asset Mapping Process

KEY QUESTIONS

1. Natural touch points
2. Asset inventory
3. Needs analysis
4. Asset Needs Relationship
5. Possible actions
6. Action criteria
7. Action plan



Natural Touch Points

**WHERE ARE THE NATURAL TOUCH POINTS
FOR CHILDREN 0-6 IN YOUR COMMUNITY?**

Asset Inventory

WHAT COMMUNITY RESOURCES AND ASSETS EXIST THAT CAN OR ARE CONTRIBUTING TO POSITIVE OUTCOMES FOR CHILDREN?

Asset
Inventory

**STATE ASSET INVENTORY
&
COMMUNITY DATA MAPS**

State Asset Inventory

EARLY LEARNING SYSTEM State Assets: oregonearlylearning.com

EARLY LARNING HUBS: Empowering Communities Around Outcomes for Children

Program/ Initiative	Summary
Health Care & Developmental Screening	<ul style="list-style-type: none">The Early Learning Council (ELC) is working with the healthcare system to implement a process for a coordinated statewide screening system. The Early Learning Council and Oregon Health Policy Board are developing policies to ensure children receive services to improve kindergarten readiness.The Early Learning Council adopted the Ages and Stages Questionnaire (ASQ) as the statewide early learning system tool for general development screening.
Kindergarten Assessment <i>Taking a look back to look forward</i>	<ul style="list-style-type: none">A statewide measurement of kindergarten readiness will launch at the end of August 2013.School districts received \$1500 grants to help with assessment administration. District training sessions will continue across the state through August.
QRIS <i>Improving and ensuring quality care in Oregon.</i>	<ul style="list-style-type: none">A quality rating and improvement system (QRIS) is a systemic approach to assess, improve, and communicate the level of quality in early learning and development programs.The Office of Child Care, Early Learning Division is currently implementing a large field test in four regions across Oregon to test the Quality Rating & Improvement System (QRIS): Crook/Deschutes/Jefferson Counties, Lane/Douglas Counties, Linn/Benton Counties and Multnomah County to reach 250 early learning and development programs participating QRIS programs by July 2014.The QRIS will roll out statewide in January of 2014.
Home visiting system (home based services) <i>Strengthening the next generation.</i>	<ul style="list-style-type: none">Oregon's home visiting system represents many home-based service programs across Oregon. The goal of the system is to strengthen both state and local home visiting capacity to effectively respond to the needs of pregnant women, children and families. The home visiting system will:<ul style="list-style-type: none">Develop shared outcomes in communities that align with statewide priorities for the early childhood system.Evaluate the impact of evidence-based models in various geographical settings (frontier, rural, and urban) to inform the state.Demonstrate success in the areas of improved maternal and newborn health, decreased child injuries, abuse and neglect; improved school readiness; improved identification of domestic violence in families; improved family economic self-sufficiency; and improved coordination of community referrals, resources, and supports.
Quality Early Learning Environments and Respite Care	<ul style="list-style-type: none">Communities have a range of quality early learning and development programs ranging from Head Start/OPK, to Relief Nurseries, Family and Center based Child Care, and Early Intervention/Early Childhood Special Education.The Governor increased funding for Head Start/OPK, Relief Nurseries, and Early Intervention/Early Childhood Special Education (EI/ECSE) in 2013.Head Start/OPK provides preschool education, child health, nutrition and family support services to Oregon's lowest income and highest need preschool children throughout the state. The program provides children with the skills necessary to be successful in school, assist families in understanding the needs of their children and encourage families to be involved in their children's education.

Community
Data Maps

Asset
Inventory

ARRON HERIFORD

Needs Analysis

WHAT ARE THE NEEDS OF
CHILDREN IN YOUR
COMMUNITY?



Asset Gaps

WHICH ASSETS MAY BE USED TO MEET WHICH NEEDS?

Needs

Assets

1



A



Overburdened Asset

2



B

Surplus: Repurpose?

3



C



4



D

Collaboration Opportunity

Asset Gap

Asset Gaps

WHICH ASSETS MAY BE USED TO MEET WHICH NEEDS?

Needs

Quality Early Learning

Improve rate of kindergarten readiness

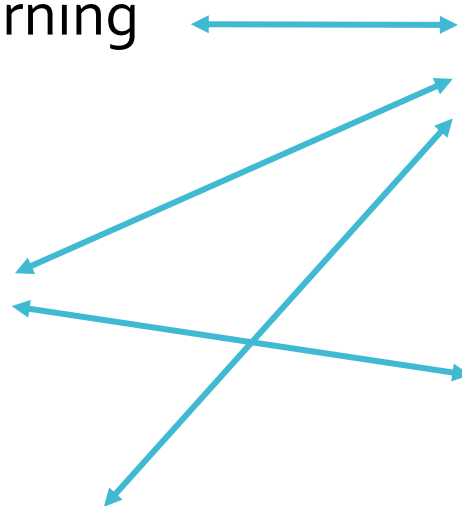
Earlier Identification and referral

Assets

Quality Child Care and/or Head Start

Library reading program

Health organizations conduct developmental screening



Asset Gaps

WHICH ASSETS MAY BE USED TO MEET WHICH NEEDS?

- Overburdened Asset
- Asset Gap
- Collaboration Opportunity
- Surplus Asset: Repurpose?

Possible
Actions

**WHAT ACTIONS MIGHT YOU TAKE, USING
YOUR ASSETS, TO ADDRESS THESE NEEDS
AND IMPROVE THE OUTCOMES FOR
CHILDREN?**

Action Criteria

**WHAT ARE THE CRITERIA THAT ACTIONS
MUST MEET?**

Action Plan

WHAT ACTIONS WILL YOU TAKE?

Eliminate actions that don't meet the criteria
Prioritize actions that meet the criteria

- What is the action?
- What need does it meet?
- What asset does it use?
- Who is responsible for it?
- Who are they accountable to?
- What is the due date?

Review

TODAY WE DISCUSSED

- What is Asset Mapping?
- Why do Asset Mapping?
- Who is involved?
- Asset Mapping Steps:
 - Identify natural touch points of children
 - Identify assets contributing to positive outcomes
 - Identify needs of children in your community
 - Explore the relationship between needs & assets
 - Identify actions to improve outcomes
 - Establish criteria to select & prioritize actions
 - Outline an Action Plan

Q & A

QUESTIONS & ANSWERS

Events

TECHNICAL ASSISTANCE EVENTS

Webinars @ 10:00 a.m.

- August 7th Creating a shared view for coordinated action with Anne Murray Allan

Summit

- August 12th Salem Convention Center 8:00-4:30

Contact Information

PRESENTER CONTACT INFORMATION

- Heidi McGowan & Shane Sasnow
 - heidi@hbsaa.com
 - Shane@taofm.com

EARLY LEARNING DIVISION CONTACT

Megan Irwin, Early Learning System Design Manager

megan.irwin@state.or.us

503-507-9462

MATERIALS ON THE EARLY LEARNING WEBSITE

OregonEarlyLearning.com

- Major Initiatives (drop down menu)
 - Early Learning Hubs
 - Technical Assistance: Info and Resources